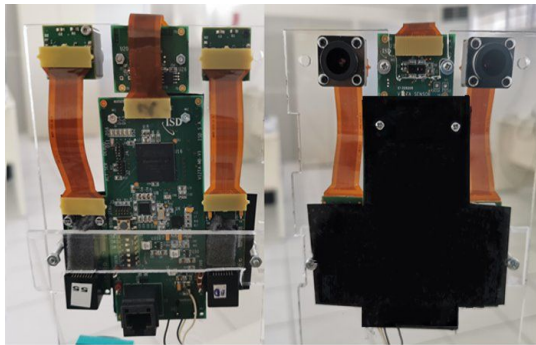




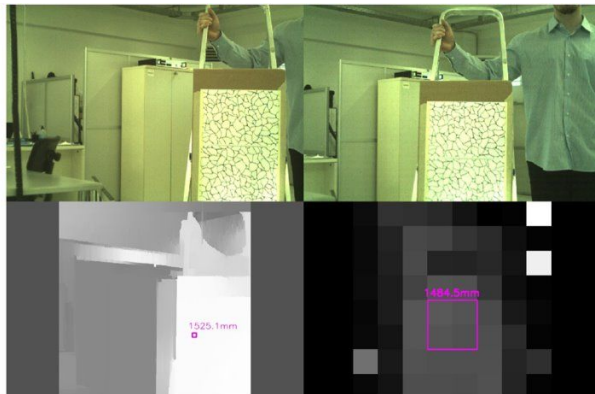
# STEREO VIEW WITH ENHANCED SHORT DISTANCE RANGING

## « SELLING » STATEMENT:

Visible camera arrays for real time surrounding view with improved 3D ranging in close distance



2-visible-1-tof demonstrator



Capture of images (1.5 m acquisition)

## KEY FEATURES

Combination of surrounding view with high accuracy depth map extraction in proximity.

Real-time precision geometry recovery in proximity to the asset, solving high-disparity problems

Interface developed between sensor and multi-camera infrastructure

Hardware fully developed  
Integration successful

### Key markets:

Objects operating in industrial environments

Moving assets with enhanced situation awareness requirements.

Contacts : ISD | [www.vizta-ecsel.eu](http://www.vizta-ecsel.eu)



*This VIZTA (Vision, Identification, with Z-sensing Technologies and key Applications) project has received funding from the ECSEL Joint Undertaking (JU) under grant agreement No 826600. The JU receives support from the European Union's Horizon 2020 research and innovation programme and France, Sweden, Greece, Spain, United Kingdom, Germany, Luxembourg, Latvia, Hungary.*  
*The VIZTA project results presented reflect only the author's view. The Commission is not responsible for any use that may be made of the information it contains*